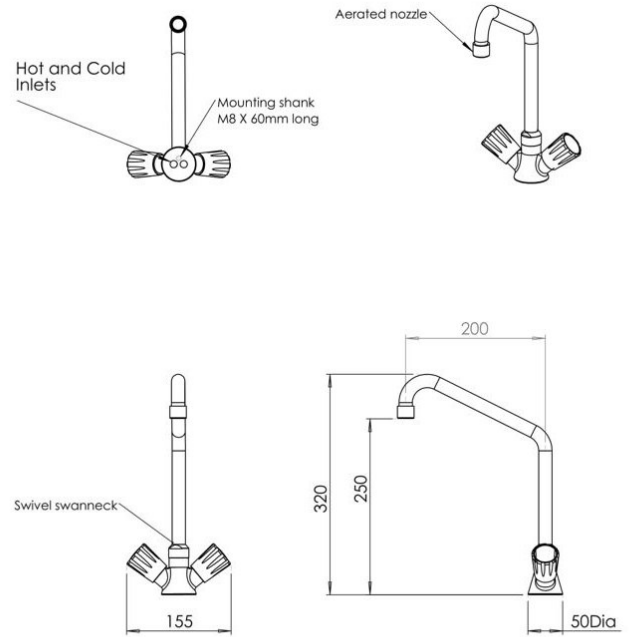


## Monobloc Mixer Laboratory Tap



Supplied with two inlet stainless steel hoses 300mm long  
 3/8" BSP female connections  
 Maximum mounting surface thickness 40mm

Product Code: ARB-MLBTAP

### Monobloc Mixer Laboratory Tap

Product Code ARB-MLBTAP

- Balanced flow monobloc mixer laboratory tap with aerated nozzle.
- WRAS Approved.
- Standard laboratory mixer tap with hot and cold water supply.
- Removable or full-bore nozzles are available on request.
- All brass body, coated in Rilsan plastic.
- Body colour is Ral 9016 white.
- ABS grey rotating handwheels.

#### Connection and Mounting

- 3 x 3/8" BSP female flat ended flexible braided SS hose, 330mm long.
- 1 x 30mm tap hole required.

#### Pressures

- Maximum pressure: 100PSI (Recommended 20PSI).
- Flow rate: 20PSI = 35 Litre/min.

#### Delivery

- From stock usually 3 to 5 working days.

\*\*All pictures shown are for illustration purpose only and may be subject to change without notice. Actual product may vary due to product enhancement. All dimensions shown are for guidance only and may be subject to change or alteration without notice. All items manufactured or purchased separately from a third party to fit our products should be checked against the actual dimensions of the physical product before purchase. We will not be liable for third party costs and consequential loss associated with the items not fitting third party components.\*\*